



[www.dino-plus.com](http://www.dino-plus.com)

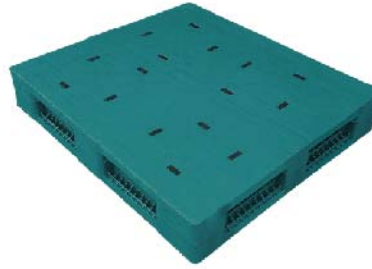
The Manufacturer of  
Plastic pallets,  
containers, bins,  
buckets, chairs,  
insulated cooler boxes  
and others

Thailand's No. 1 Plastic Pallets

# Titan Series

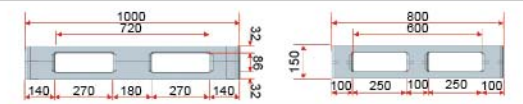
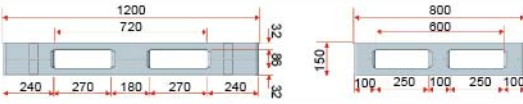
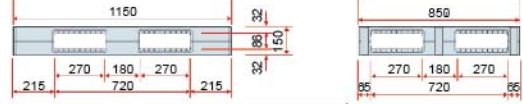
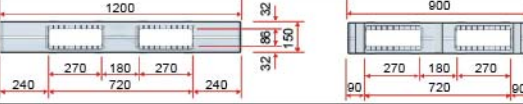
Height 150 mm.

# Heavy Duty Pallets



Style : Reversible  
 Bottom Support : Double Deck  
 Material : HDPE

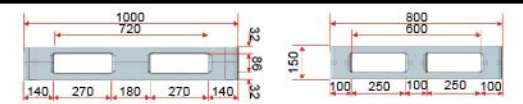
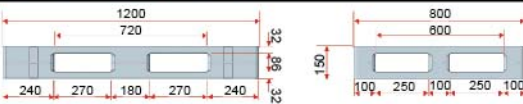
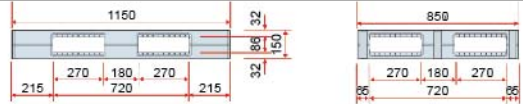
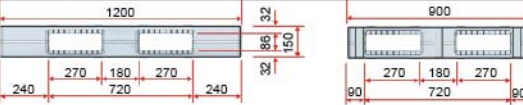
-  4 way
-  N/A
-  N/A

No	Item No	Size WxLxH (mm.)	Static (kg.)	Dynamic (kg.)	Racking Selective (kg.)	Steel Reinforced	Drawing Specification (mm.)
1	DHS 0810 RB	800x1000x150	4500	2000	800	NO	
2	DHS 0812 RB	800x1200x150	4500	2000	800	NO	
3	DHS 8511 RB	850x1150x150	4500	2000	800	NO	
4	DHS 8511 SS-3 <small>*เหล็กขนานด้าน 1150 มม. *Steel parallel on 1150 mm.</small>	850x1150x150	4500	2000	1000	YES	
5	DHS 0912 RB	900x1200x150	4500	2000	800	NO	
6	DHS 0912 SS-3 <small>*เหล็กขนานด้าน 1200 มม. *Steel parallel on 1200 mm.</small>	900x1200x150	4500	2000	1000	YES	



Style : Reversible  
 Bottom Support : Double Deck  
 Material : HDPE

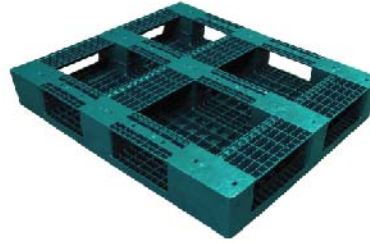
-  4 way
-  N/A
-  N/A

No	Item No	Size WxLxH (mm.)	Static (kg.)	Dynamic (kg.)	Racking Selective (kg.)	Steel Reinforced	Drawing Specification (mm.)
1	DHL 0810 FT	800x1000x150	4500	2000	800	NO	
2	DHL 0812 FT	800x1200x150	4500	2000	800	NO	
3	DHL 8511 FT	850x1150x150	4500	2000	800	NO	
4	DHL 8511 SS-3 <small>*เหล็กขนานด้าน 1150 มม. *Steel parallel on 1150 mm.</small>	850x1150x150	4500	2000	1000	YES	
5	DHL 0912 FT	900x1200x150	4500	2000	800	NO	
6	DHL 0912 SS-3 <small>*เหล็กขนานด้าน 1200 มม. *Steel parallel on 1200 mm.</small>	900x1200x150	4500	2000	1000	YES	

# Titan Series

Height 150 mm.

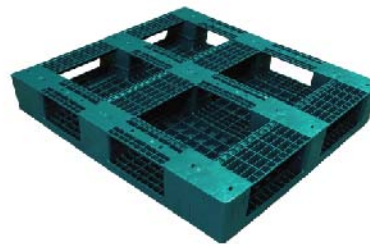
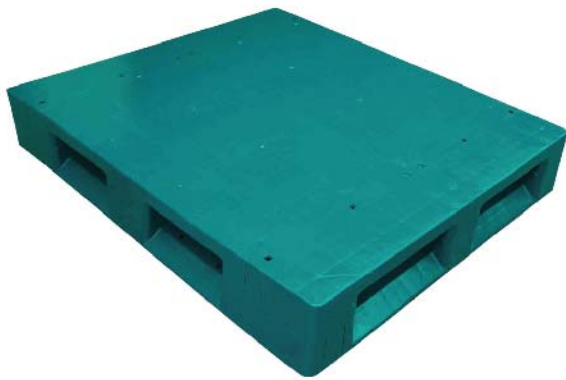
# Heavy Duty Pallets



Style : Full-Perimeter  
 Bottom Support : Cross  
 Material : HDPE

-  4 way
-  4 way
-  N/A

No	Item No	Size WxLxH (mm.)	Static (kg.)	Dynamic (kg.)	Racking Selective (kg.)	Steel Reinforced	Drawing Specification (mm.)
1	WHS 0810 RB	800x1000x150	4500	2000	500	NO	
2	WHS 0810 SS-5 <small>*เหล็กไขว้</small>	800x1000x150 <small>*Steel intersect</small>	6000	2000	1000	YES	
3	WHS 0812 RB	800x1200x150	4500	2000	500	NO	
4	WHS 0812 SS-5 <small>*เหล็กไขว้</small>	800x1200x150 <small>*Steel intersect</small>	6000	2000	1000	YES	
5	WHS 8511 RB	850x1150x150	4500	2000	500	NO	
6	WHS 8511 SS-3 <small>*เหล็กขนานด้าน 1150 มม.</small>	850x1150x150 <small>*Steel parallel on 1150 mm.</small>	4500	2000	1000	YES	
7	WHS 0912 RB	900x1200x150	4500	2000	500	NO	
8	WHS 0912 SS-3 <small>*เหล็กขนานด้าน 1200 มม.</small>	900x1200x150 <small>*Steel parallel on 1200 mm.</small>	4500	2000	1000	YES	



Style : Full-Perimeter  
 Bottom Support : Cross  
 Material : HDPE

-  4 way
-  4 way
-  N/A

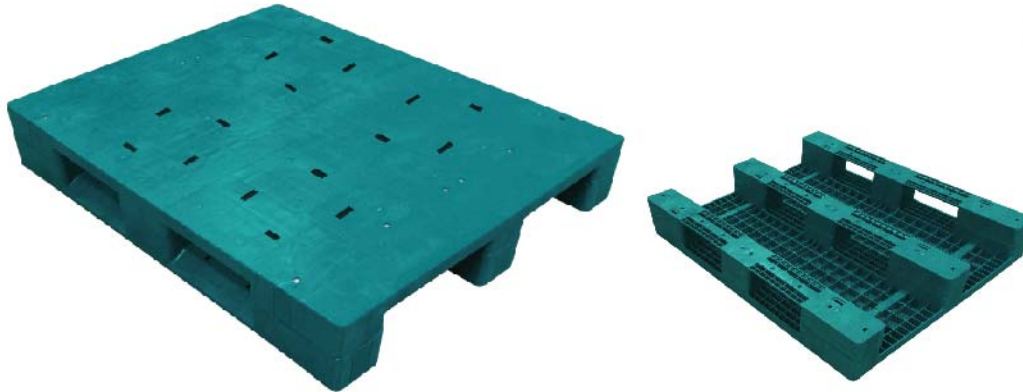
No	Item No	Size WxLxH (mm.)	Static (kg.)	Dynamic (kg.)	Racking Selective (kg.)	Steel Reinforced	Drawing Specification (mm.)
1	WHL 0810 FT	800x1000x150	4500	2000	500	NO	
2	WHL 0810 SS-5 <small>*เหล็กไขว้</small>	800x1000x150 <small>*Steel intersect</small>	6000	2000	1000	YES	
3	WHL 0812 FT	800x1200x150	4500	2000	500	NO	
4	WHL 0812 SS-5 <small>*เหล็กไขว้</small>	800x1200x150 <small>*Steel intersect</small>	6000	2000	1000	YES	
5	WHL 8511 FT	850x1150x150	4500	2000	500	NO	
6	WHL 8511 SS-3 <small>*เหล็กขนานด้าน 1150 มม.</small>	850x1150x150 <small>*Steel parallel on 1150 mm.</small>	4500	2000	1000	YES	
7	WHL 0912 FT	900x1200x150	4500	2000	500	NO	
8	WHL 0912 SS-3 <small>*เหล็กขนานด้าน 1200 มม.</small>	900x1200x150 <small>*Steel parallel on 1200 mm.</small>	4500	2000	1000	YES	

Remark: \*Racking load is specified under Selective rack. However, Racking load capability may vary with different product packaging, and different fork entry. Under other type of rack such as Drive-In rack, please contact salesperson.  
 \*\*Pallet dimension and weight are produced with tolerance. Standard dimension allowance range: +/-0.7% ; weight tolerance +/-1 kg.

# Titan Series

Height 150 mm.

# Heavy Duty Pallets



Style : Non-Perimeter

Bottom Support : 3 Runners

Material : HDPE



4 way

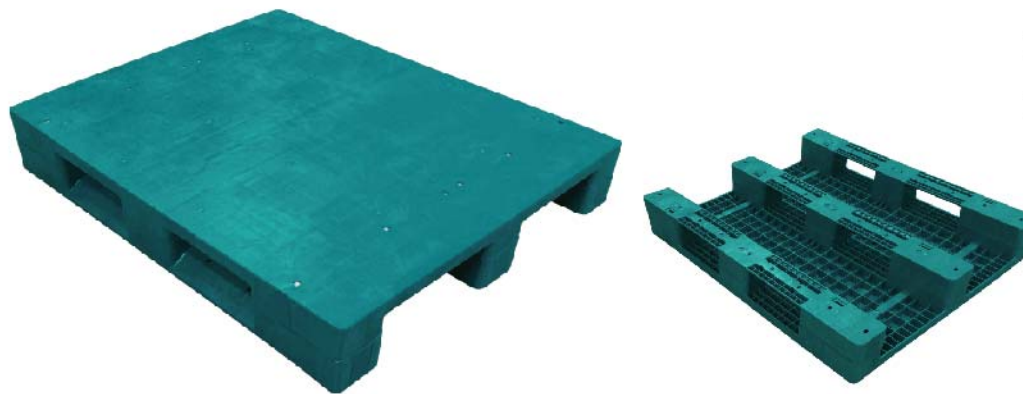


2 way



2 way

No	Item No	Size WxLxH (mm.)	Static (kg.)	Dynamic (kg.)	Racking Selective (kg.)	Steel Reinforced	Drawing Specification (mm.)
1	EHS 0810 SSX-2 <small>*เหล็กขนานด้าน 800 มม.</small>	800x1000x150 <small>*Steel parallel on 800 mm.</small>	4500	2000	500	YES	
2	EHS 0810 SS-5 <small>*เหล็กไขว้</small>	800x1000x150 <small>*Steel intersect</small>	6000	2000	1000	YES	
3	EHS 0812 SSX-2 <small>*เหล็กขนานด้าน 800 มม.</small>	800x1200x150 <small>*Steel parallel on 800 mm.</small>	4500	2000	500	YES	
4	EHS 0812 SS-5 <small>*เหล็กไขว้</small>	800x1200x150 <small>*Steel intersect</small>	6000	2000	1000	YES	



Style : Non-Perimeter

Bottom Support : 3 Runners

Material : HDPE



4 way



2 way



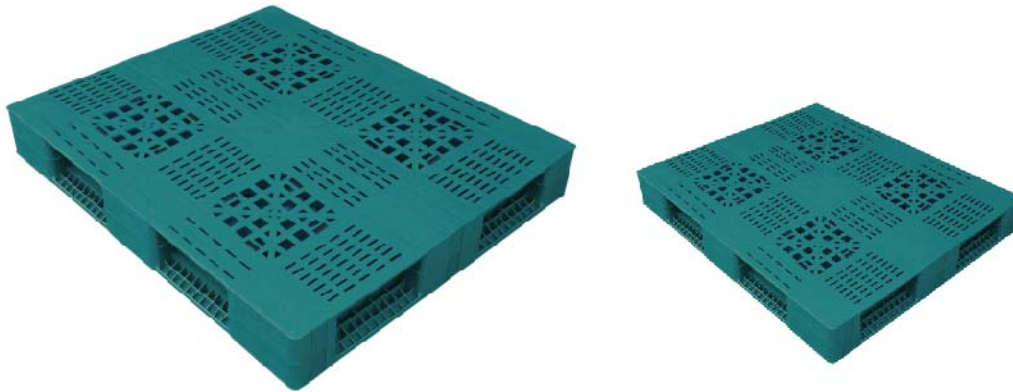
2 way

No	Item No	Size WxLxH (mm.)	Static (kg.)	Dynamic (kg.)	Racking Selective (kg.)	Steel Reinforced	Drawing Specification (mm.)
1	EHL 0810 SSX-2 <small>*เหล็กขนานด้าน 800 มม.</small>	800x1000x150 <small>*Steel parallel on 800 mm.</small>	4500	2000	500	YES	
2	EHL 0810 SS-5 <small>*เหล็กไขว้</small>	800x1000x150 <small>*Steel intersect</small>	6000	2000	1000	YES	
3	EHL 0812 SSX-2 <small>*เหล็กขนานด้าน 800 มม.</small>	800x1200x150 <small>*Steel parallel on 800 mm.</small>	4500	2000	500	YES	
4	EHL 0812 SS-5 <small>*เหล็กไขว้</small>	800x1200x150 <small>*Steel intersect</small>	6000	2000	1000	YES	

# Titan Series

Height 150 mm.

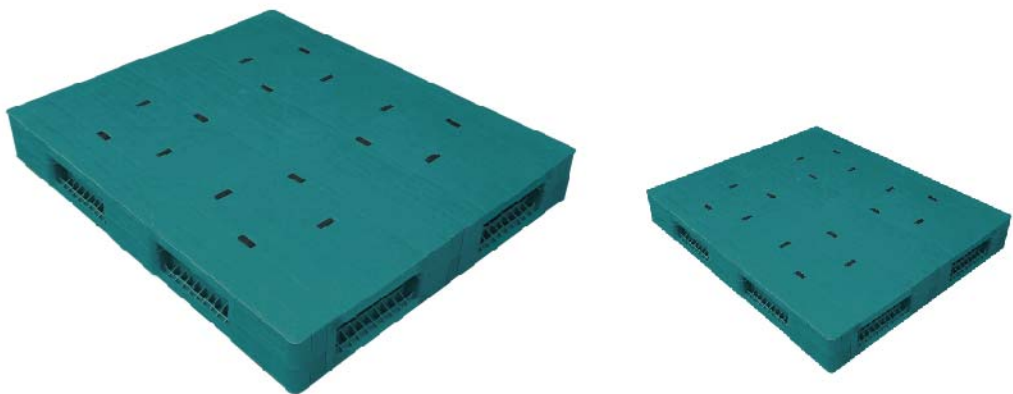
# Heavy Duty Pallets



Style : Reversible  
 Bottom Support : Double Deck  
 Material : HDPE

-  4 way
-  N/A
-  N/A

No	Item No	Size WxLxH (mm.)	Static (kg.)	Dynamic (kg.)	Racking Selective (kg.)	Steel Reinforced	Drawing Specification (mm.)
1	DHV 1012 RB	1000x1200x150	6000	2000	1000	NO	
2	DHV 1012 SS-3 <small>*เหล็กขนานด้าน 1200 มม.</small>	1000x1200x150 <small>*Steel parallel on 1200 mm.</small>	6500	2000	1200	YES	
3	DHV 1012 SSX-3 <small>*เหล็กขนานด้าน 1000 มม. ทางเข้าด้าน 1200 มม.</small>	1000x1200x150 <small>*Steel parallel on 1000 mm.</small>	6500	2000	1200	YES	
4	DHV 1112 RB	1100x1200x150	6000	2000	1000	NO	
5	DHV 1112 SS-3 <small>*เหล็กขนานด้าน 1200 มม.</small>	1100x1200x150 <small>*Steel parallel on 1200 mm.</small>	6500	2000	1200	YES	
6	DHV 1112 SSX-3 <small>*เหล็กขนานด้าน 1100 มม. ทางเข้าด้าน 1200 มม.</small>	1100x1200x150 <small>*Steel parallel on 1100 mm.</small>	6500	2000	1200	YES	
7	DHV 1212 RB	1200x1200x150	6000	2000	1000	NO	
8	DHV 1212 SS-3 <small>*เหล็กขนาน 1 ด้าน</small>	1200x1200x150 <small>*Steel parallel only one side</small>	6500	2000	1200	YES	



Style : Reversible  
 Bottom Support : Double Deck  
 Material : HDPE

-  4 way
-  N/A
-  N/A

No	Item No	Size WxLxH (mm.)	Static (kg.)	Dynamic (kg.)	Racking Selective (kg.)	Steel Reinforced	Drawing Specification (mm.)
1	DHS 1012 RB	1000x1200x150	6000	2000	1000	NO	
2	DHS 1012 SS-3 <small>*เหล็กขนานด้าน 1200 มม.</small>	1000x1200x150 <small>*Steel parallel on 1200 mm.</small>	6500	2000	1200	YES	
3	DHS 1012 SSX-3 <small>*เหล็กขนานด้าน 1000 มม. ทางเข้าด้าน 1200 มม.</small>	1000x1200x150 <small>*Steel parallel on 1000 mm.</small>	6500	2000	1200	YES	
4	DHS 1112 RB	1100x1200x150	6000	2000	1000	NO	
5	DHS 1112 SS-3 <small>*เหล็กขนานด้าน 1200 มม.</small>	1100x1200x150 <small>*Steel parallel on 1200 mm.</small>	6500	2000	1200	YES	
6	DHS 1112 SSX-3 <small>*เหล็กขนานด้าน 1100 มม. ทางเข้าด้าน 1200 มม.</small>	1100x1200x150 <small>*Steel parallel on 1100 mm.</small>	6500	2000	1200	YES	
7	DHS 1212 RB	1200x1200x150	6000	2000	1000	NO	
8	DHS 1212 SS-3 <small>*เหล็กขนาน 1 ด้าน</small>	1200x1200x150 <small>*Steel parallel only one side</small>	6500	2000	1200	YES	

Remark: \*Racking load is specified under Selective rack. However, Racking load capability may vary with different product packaging, and different fork entry. Under other type of rack such as Drive-In rack, please contact salesperson.  
 \*\*Pallet dimension and weight are produced with tolerance. Standard dimension allowance range: +/-0.7% ; weight tolerance +/-1 kg.

# Titan Series


Height 150 mm.

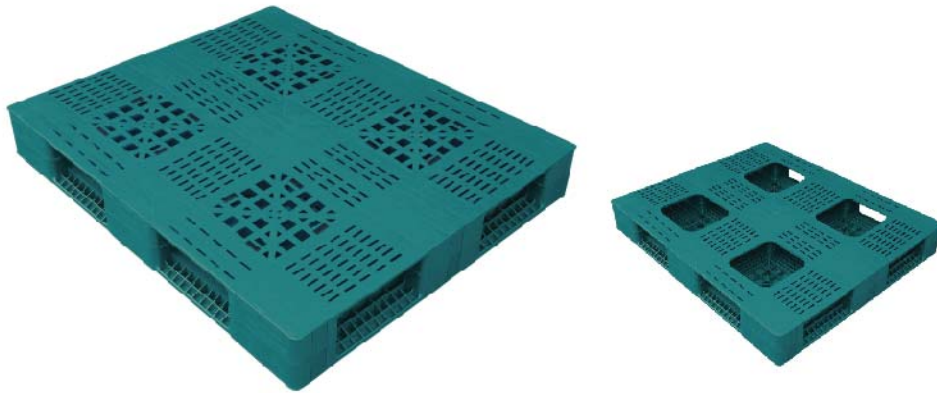
# Heavy Duty Pallets



Style : Reversible  
 Bottom Support : Double Deck  
 Material : HDPE

-  4 way
-  N/A
-  N/A

No	Item No	Size WxLxH (mm.)	Static (kg.)	Dynamic (kg.)	Racking Selective (kg.)	Steel Reinforced	Drawing Specification (mm.)
1	DHL 1012 FT	1000x1200x150	6000	2000	1000	NO	
2	DHL 1012 SS-3 <small>*เหล็กขนานด้าน 1200 มม.</small>	1000x1200x150 <small>*Steel parallel on 1200 mm.</small>	6500	2000	1200	YES	
3	DHL 1012 SSX-3 <small>*เหล็กขนานด้าน 1000 มม. พวงข้างด้าน 1200 มม.</small>	1000x1200x150 <small>*Steel parallel on 1000 mm.</small>	6500	2000	1200	YES	
4	DHL 1112 FT	1100x1200x150	6000	2000	1000	NO	
5	DHL 1112 SS-3 <small>*เหล็กขนานด้าน 1200 มม.</small>	1100x1200x150 <small>*Steel parallel on 1200 mm.</small>	6500	2000	1200	YES	
6	DHL 1112 SSX-3 <small>*เหล็กขนานด้าน 1100 มม. พวงข้างด้าน 1200 มม.</small>	1100x1200x150 <small>*Steel parallel on 1100 mm.</small>	6500	2000	1200	YES	
7	DHL 1212 FT	1200x1200x150	6000	2000	1000	NO	
8	DHL 1212 SS-3 <small>*เหล็กขนาน 1 ด้าน</small>	1200x1200x150 <small>*Steel parallel only one side</small>	6500	2000	1200	YES	



Style : Full-Perimeter  
 Bottom Support : Cross  
 Material : HDPE

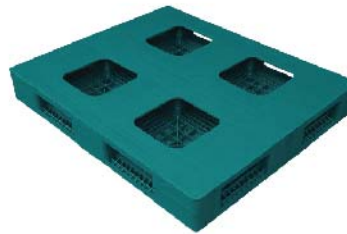
-  4 way
-  4 way
-  N/A

No	Item No	Size WxLxH (mm.)	Static (kg.)	Dynamic (kg.)	Racking Selective (kg.)	Steel Reinforced	Drawing Specification (mm.)
1	WHV 1012 RB	1000x1200x150	6000	2000	1000	NO	
2	WHV 1012 SS-3 <small>*เหล็กขนานด้าน 1200 มม.</small>	1000x1200x150 <small>*Steel parallel on 1200 mm.</small>	6500	2000	1200	YES	
3	WHV 1012 SSX-3 <small>*เหล็กขนานด้าน 1000 มม. พวงข้างด้าน 1200 มม.</small>	1000x1200x150 <small>*Steel parallel on 1000 mm.</small>	6500	2000	1200	YES	
4	WHV 1112 RB	1100x1200x150	6000	2000	1000	NO	
5	WHV 1112 SS-3 <small>*เหล็กขนานด้าน 1200 มม.</small>	1100x1200x150 <small>*Steel parallel on 1200 mm.</small>	6500	2000	1200	YES	
6	WHV 1112 SSX-3 <small>*เหล็กขนานด้าน 1100 มม. พวงข้างด้าน 1200 มม.</small>	1100x1200x150 <small>*Steel parallel on 1100 mm.</small>	6500	2000	1200	YES	
7	WHV 1212 RB	1200x1200x150	6000	2000	1000	NO	
8	WHV 1212 SS-3 <small>*เหล็กขนาน 1 ด้าน</small>	1200x1200x150 <small>*Steel parallel only one side</small>	6500	2000	1200	YES	

# Titan Series

Height 150 mm.

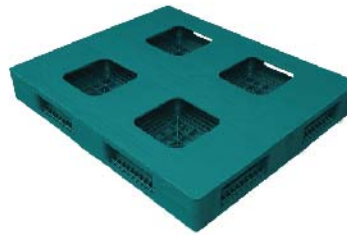
# Heavy Duty Pallets



Style : Full-Perimeter  
 Bottom Support : Cross  
 Material : HDPE

-  4 way
-  4 way
-  N/A

No	Item No	Size WxLxH (mm.)	Static (kg.)	Dynamic (kg.)	Racking Selective (kg.)	Steel Reinforced	Drawing Specification (mm.)
1	WHS 1012 RB	1000x1200x150	6000	2000	1000	NO	
2	WHS 1012 SS-3 <small>*เหล็กขนานด้าน 1200 มม.</small>	1000x1200x150 <small>*Steel parallel on 1200 mm.</small>	6500	2000	1200	YES	
3	WHS 1012 SSX-3 <small>*เหล็กขนานด้าน 1000 มม. ทางข้างด้าน 1200 มม.</small>	1000x1200x150 <small>*Steel parallel on 1000 mm.</small>	6500	2000	1200	YES	
4	WHS 1112 RB	1100x1200x150	6000	2000	1000	NO	
5	WHS 1112 SS-3 <small>*เหล็กขนานด้าน 1200 มม.</small>	1100x1200x150 <small>*Steel parallel on 1200 mm.</small>	6500	2000	1200	YES	
6	WHS 1112 SSX-3 <small>*เหล็กขนานด้าน 1100 มม. ทางข้างด้าน 1200 มม.</small>	1100x1200x150 <small>*Steel parallel on 1100 mm.</small>	6500	2000	1200	YES	
7	WHS 1212 RB	1200x1200x150	6000	2000	1000	NO	
8	WHS 1212 SS-3 <small>*เหล็กขนาน 1 ด้าน</small>	1200x1200x150 <small>*Steel parallel only one side</small>	6500	2000	1200	YES	



Style : Full-Perimeter  
 Bottom Support : Cross  
 Material : HDPE

-  4 way
-  4 way
-  N/A

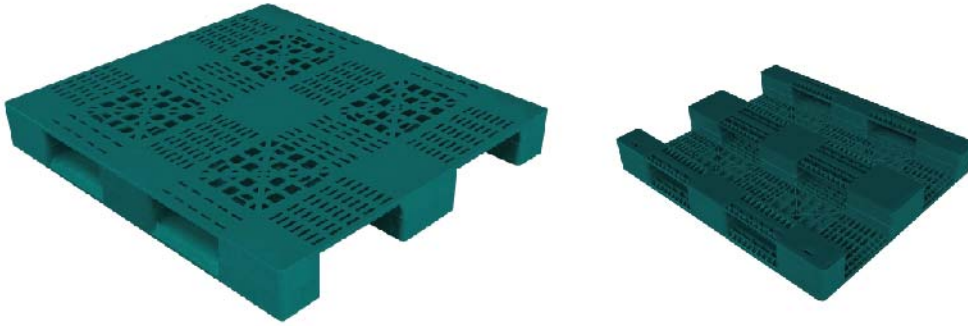
No	Item No	Size WxLxH (mm.)	Static (kg.)	Dynamic (kg.)	Racking Selective (kg.)	Steel Reinforced	Drawing Specification (mm.)
1	WHL 1012 FT	1000x1200x150	6000	2000	1000	NO	
2	WHL 1012 SS-3 <small>*เหล็กขนานด้าน 1200 มม.</small>	1000x1200x150 <small>*Steel parallel on 1200 mm.</small>	6500	2000	1200	YES	
3	WHL 1012 SSX-3 <small>*เหล็กขนานด้าน 1000 มม. ทางข้างด้าน 1200 มม.</small>	1000x1200x150 <small>*Steel parallel on 1000 mm.</small>	6500	2000	1200	YES	
4	WHL 1112 FT	1100x1200x150	6000	2000	1000	NO	
5	WHL 1112 SS-3 <small>*เหล็กขนานด้าน 1200 มม.</small>	1100x1200x150 <small>*Steel parallel on 1200 mm.</small>	6500	2000	1200	YES	
6	WHL 1112 SSX-3 <small>*เหล็กขนานด้าน 1100 มม. ทางข้างด้าน 1200 มม.</small>	1100x1200x150 <small>*Steel parallel on 1100 mm.</small>	6500	2000	1200	YES	
7	WHL 1212 FT	1200x1200x150	6000	2000	1000	NO	
8	WHL 1212 SS-3 <small>*เหล็กขนาน 1 ด้าน</small>	1200x1200x150 <small>*Steel parallel only one side</small>	6500	2000	1200	YES	

Remark: \*Racking load is specified under Selective rack. However, Racking load capability may vary with different product packaging, and different fork entry. Under other type of rack such as Drive-In rack, please contact salesperson.  
 \*\*Pallet dimension and weight are produced with tolerance. Standard dimension allowance range: +/-0.7% ; weight tolerance +/-1 kg.

# Titan Series

Height 150 mm.

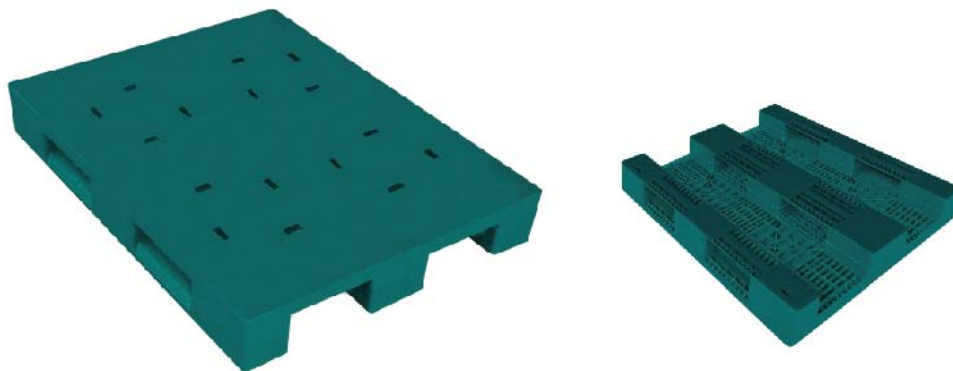
# Heavy Duty Pallets



Style : Non-Perimeter  
 Bottom Support : 3 Runners  
 Material : HDPE



No	Item No	Size WxLxH (mm.)	Static (kg.)	Dynamic (kg.)	Racking Selective (kg.)	Steel Reinforced	Drawing Specification (mm.)
1	EHV 1012 SSX-3 <i>*เหล็กขนานด้าน 1000 มม.</i>	1000x1200x150 <i>*Steel parallel on 1000 mm.</i>	6500	2000	800	YES	
2	EHV 1112 RB	1100x1200x150	6000	1200	800	NO	
3	EHV 1112 SS-3 <i>*เหล็กขนานด้าน 1200 มม.</i>	1100x1200x150 <i>*Steel parallel on 1200 mm.</i>	6500	1200	1200	YES	
4	EHV 1112 SSX-3 <i>*เหล็กขนานด้าน 1100 มม.</i>	1100x1200x150 <i>*Steel parallel on 1100 mm.</i>	6500	2000	800	YES	
5	EHV 1212 SS-3 <i>*เหล็กขนานด้านขาสถิ</i>	1200x1200x150 <i>*Steel parallel on skid</i>	6500	1200	1200	YES	
6	EHV 1212 SSX-3 <i>*เหล็กขนานด้านตรงข้ามขาสถิ</i>	1200x1200x150 <i>*Steel parallel support dynamic loading</i>	6500	2000	800	YES	
7	EHV 1212 SS-6 <i>*เหล็กไขว้</i>	1200x1200x150 <i>*Steel intersect</i>	6500	2000	1200	YES	



Style : Non-Perimeter  
 Bottom Support : 3 Runners  
 Material : HDPE



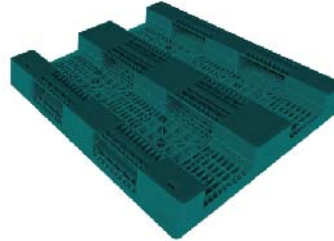
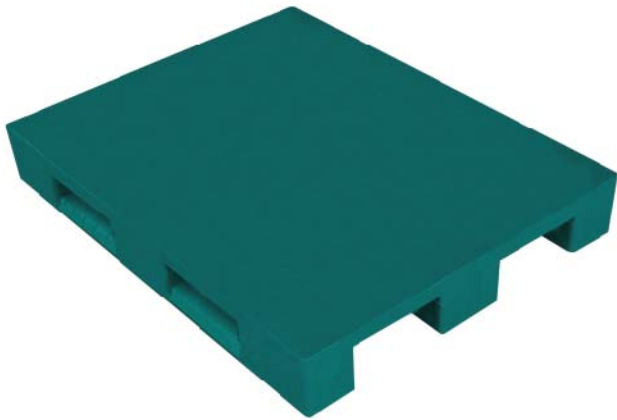
No	Item No	Size WxLxH (mm.)	Static (kg.)	Dynamic (kg.)	Racking Selective (kg.)	Steel Reinforced	Drawing Specification (mm.)
1	EHS 1012 SSX-3 <i>*เหล็กขนานด้าน 1000 มม.</i>	1000x1200x150 <i>*Steel parallel on 1000 mm.</i>	6500	2000	800	YES	
2	EHS 1112 RB	1100x1200x150	6000	1200	800	NO	
3	EHS 1112 SS-3 <i>*เหล็กขนานด้าน 1200 มม.</i>	1100x1200x150 <i>*Steel parallel on 1200 mm.</i>	6500	1200	1200	YES	
4	EHS 1112 SSX-3 <i>*เหล็กขนานด้าน 1100 มม.</i>	1100x1200x150 <i>*Steel parallel on 1100 mm.</i>	6500	2000	800	YES	
5	EHS 1212 SS-3 <i>*เหล็กขนานด้านขาสถิ</i>	1200x1200x150 <i>*Steel parallel on skid</i>	6500	1200	1200	YES	
6	EHS 1212 SSX-3 <i>*เหล็กขนานด้านตรงข้ามขาสถิ</i>	1200x1200x150 <i>*Steel parallel support dynamic loading</i>	6500	2000	800	YES	
7	EHS 1212 SS-6 <i>*เหล็กไขว้</i>	1200x1200x150 <i>*Steel intersect</i>	6500	2000	1200	YES	



# Titan Series

Height 150 mm.

# Heavy Duty Pallets



Style : Non-Perimeter  
 Bottom Support : 3 Runners  
 Material : HDPE

- 4 way
- 2 way
- 2 way

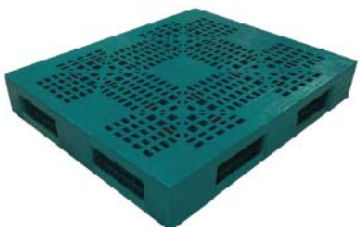
No	Item No	Size WxLxH (mm.)	Static (kg.)	Dynamic (kg.)	Racking Selective (kg.)	Steel Reinforced	Drawing Specification (mm.)
1	EHL 1012 SSX-3 <i>*เหล็กขนานด้าน 1000 มม.</i>	1000x1200x150 <i>*Steel parallel on 1000 mm.</i>	6500	2000	800	YES	
2	EHL 1112 FT	1100x1200x150	6000	1200	800	NO	
3	EHL 1112 SS-3 <i>*เหล็กขนานด้าน 1200 มม.</i>	1100x1200x150 <i>*Steel parallel on 1200 mm.</i>	6500	1200	1200	YES	
4	EHL 1112 SSX-3 <i>*เหล็กขนานด้าน 1100 มม.</i>	1100x1200x150 <i>*Steel parallel on 1100 mm.</i>	6500	2000	800	YES	
5	EHL 1212 SS-3 <i>*เหล็กขนานด้านขาสกี้</i>	1200x1200x150 <i>*Steel parallel on skid</i>	6500	1200	1200	YES	
6	EHL 1212 SSX-3 <i>*เหล็กขนานด้านตรงข้ามขาสกี้</i>	1200x1200x150 <i>*Steel parallel support dynamic loading</i>	6500	2000	800	YES	
7	EHL 1212 SS-6 <i>*เหล็กไขว้</i>	1200x1200x150 <i>*Steel intersect</i>	6500	2000	1200	YES	

# Titan Series

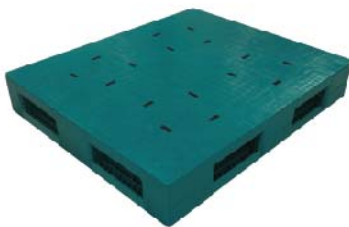
Height 180 mm.

# Heavy Duty Pallets

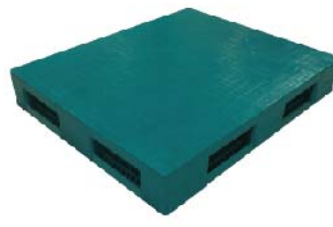
DHV 1012 RBH18 1000x1200x180 mm



DHS 1012 RBH18 1000x1200x180 mm



DHL 1012 FTH18 1000x1200x180 mm

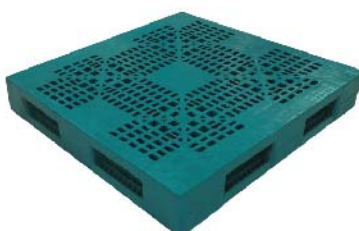


Style : Reversible  
 Bottom Support : Double Deck  
 Material : HDPE  
 Static Load : 10000 kg  
 Dynamic Load : 2500 kg  
 Racking Load\* : 1200 kg  
 (For Selective Racking)

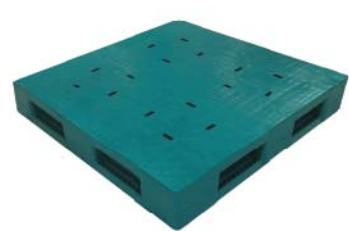
- 4 way
- N/A
- N/A



DHV 1212 RBH18 1200x1200x180 mm



DHS 1212 RBH18 1200x1200x180 mm

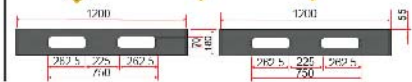


DHL 1212 FTH18 1200x1200x180 mm



Style : Reversible  
 Bottom Support : Double Deck  
 Material : HDPE  
 Static Load : 10000 kg  
 Dynamic Load : 2500 kg  
 Racking Load\* : 1200 kg  
 (For Selective Racking)

- 4 way
- N/A
- N/A



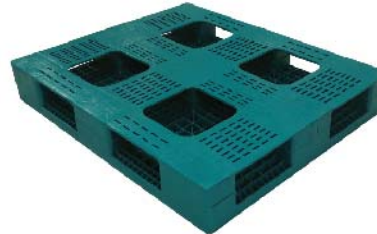
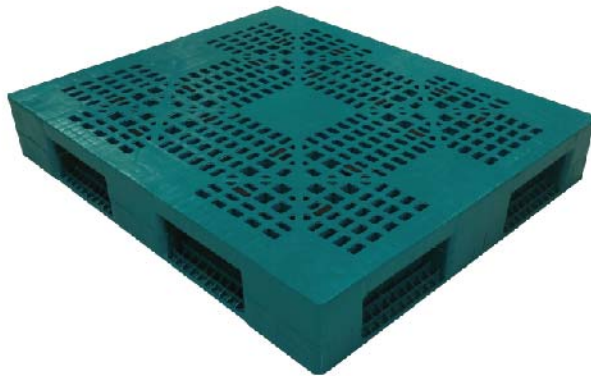
Remark: \*Racking load is specified under Selective rack. However, Racking load capability may vary with different product packaging, and different fork entry. Under other type of rack such as Drive-In rack, please contact salesperson.  
 \*\*Pallet dimension and weight are produced with tolerance. Standard dimension allowance range: +/-0.7% ; weight tolerance +/-1 kg.

# Titan Series

Height 180 mm.

# Heavy Duty Pallets

Style : Full-Perimeter  
 Bottom Support : Cross  
 Material : HDPE

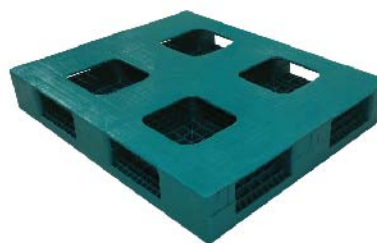
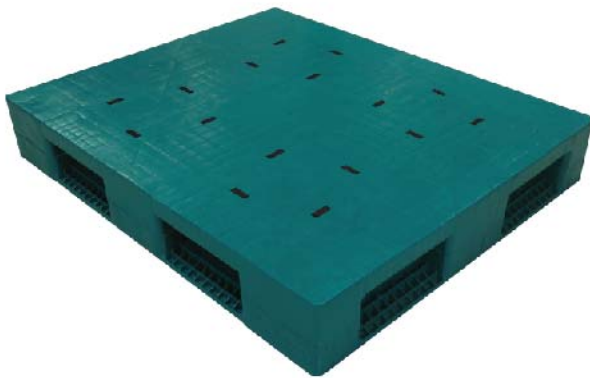


- 4 way
- 4 way
- N/A

No	Item No	Size WxLxH (mm.)	Static (kg.)	Dynamic (kg.)	Racking Selective (kg.)	Steel Reinforced	Drawing Specification (mm.)
1	WHV 1012 RBH18	1000x1200x180	10000	2000	1000	NO	
2	WHV 1012 SS-3H18 <small>*เหล็กขนานด้าน 1200 มม.</small>	1000x1200x180 <small>*Steel parallel on 1200 mm.</small>	10000	2000	1500	YES	
3	WHV 1212 RBH18	1200x1200x180	10000	2000	1000	NO	
4	WHV 1212 SS-3H18 <small>*เหล็กขนาน 1 ด้าน</small>	1200x1200x180 <small>*Steel parallel only one side</small>	10000	2000	1000/ 1500**	YES	

\*\*1500 kg. racking when the steel reinforced direction is perpendicular with rack beam support.

Style : Full-Perimeter  
 Bottom Support : Cross  
 Material : HDPE



- 4 way
- 4 way
- N/A

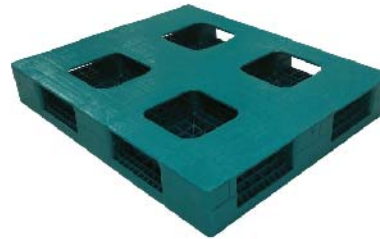
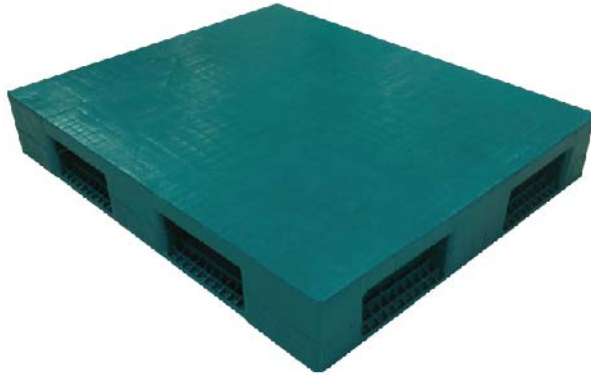
No	Item No	Size WxLxH (mm.)	Static (kg.)	Dynamic (kg.)	Racking Selective (kg.)	Steel Reinforced	Drawing Specification (mm.)
1	WHS 1012 RBH18	1000x1200x180	10000	2000	1000	NO	
2	WHS 1012 SS-3H18 <small>*เหล็กขนานด้าน 1200 มม.</small>	1000x1200x180 <small>*Steel parallel on 1200 mm.</small>	10000	2000	1500	YES	
3	WHS 1212 RBH18	1200x1200x180	10000	2000	1000	NO	
4	WHS 1212 SS-3H18 <small>*เหล็กขนาน 1 ด้าน</small>	1200x1200x180 <small>*Steel parallel only one side</small>	10000	2000	1000/ 1500**	YES	

\*\*1500 kg. racking when the steel reinforced direction is perpendicular with rack beam support.

# Titan Series

Height 180 mm.

# Heavy Duty Pallets

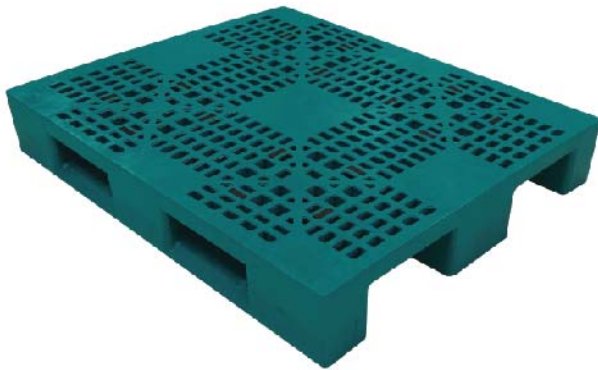


Style : Full-Perimeter  
 Bottom Support : Cross  
 Material : HDPE



No	Item No	Size WxLxH (mm.)	Static (kg.)	Dynamic (kg.)	Racking Selective (kg.)	Steel Reinforced	Drawing Specification (mm.)
1	WHL 1012 FTH18	1000x1200x180	10000	2000	1000	NO	
2	WHL1012 SS-3H18 <i>*เหล็กขนานด้าน 1200 มม.</i>	1000x1200x180 <i>*Steel parallel on 1200 mm.</i>	10000	2000	1500	YES	
3	WHL 1212 FTH18	1200x1200x180	10000	2000	1000	NO	
4	WHL1212 SS-3H18 <i>*เหล็กขนาน 1 ด้าน</i>	1200x1200x180 <i>*Steel parallel on skid</i>	10000	2000	1000/ 1500**	YES	

\*\*1500 kg. racking when the steel reinforced direction is perpendicular with rack beam support.



Style : Non-Perimeter  
 Bottom Support : 3 Runners  
 Material : HDPE



No	Item No	Size WxLxH (mm.)	Static (kg.)	Dynamic (kg.)	Racking Selective (kg.)	Steel Reinforced	Drawing Specification (mm.)
1	EHV 1012 RBH18	1000x1200x180	8000	1500	1000	NO	
2	EHV 1012 SS-3H18 <i>*เหล็กขนานด้าน 1200 มม.</i>	1000x1200x180 <i>*Steel parallel on 1200 mm.</i>	8000	1500	1200	YES	
3	EHV 1212 RBH18	1200x1200x180	8000	1500	1000	NO	
4	EHV 1212 SS-3H18 <i>*เหล็กขนานด้านยาว</i>	1200x1200x180 <i>*Steel parallel on skid</i>	8000	1500	1200	YES	
5	EHV 1012 RBH18D	1000x1200x180	8000	2000	1200	NO	
6	EHV 1212 RBH18D	1200x1200x180	8000	2000	1200	NO	

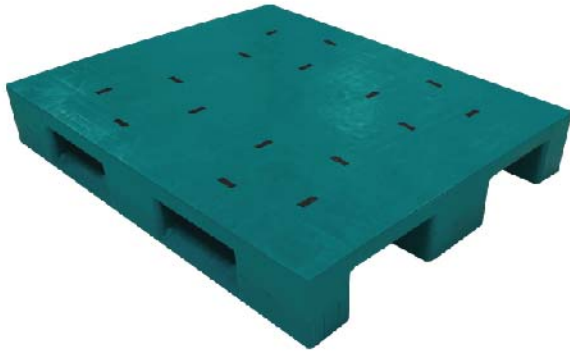
Remark: \*Racking load is specified under Selective rack. However, Racking load capability may vary with different product packaging, and different fork entry. Under other type of rack such as Drive-In rack, please contact salesperson.

\*\*Pallet dimension and weight are produced with tolerance. Standard dimension allowance range: +/-0.7% ; weight tolerance +/-1 kg.

# Titan Series

Height 180 mm.

# Heavy Duty Pallets



Style : Non-Perimeter

Bottom Support : 3 Runners

Material : HDPE



4 way

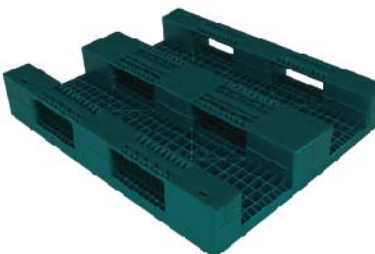
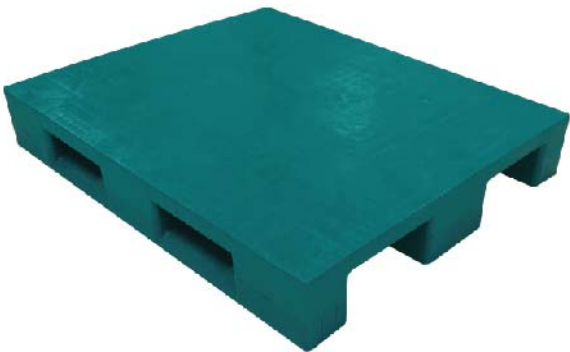


2 way



2 way

No	Item No	Size WxLxH (mm.)	Static (kg.)	Dynamic (kg.)	Racking Selective (kg.)	Steel Reinforced	Drawing Specification (mm.)
1	EHS 1012 RBH18	1000x1200x180	8000	1500	1000	NO	
2	EHS 1012 SS-3H18 <small>*เหล็กขนานด้าน 1200 มม.</small>	1000x1200x180 <small>*Steel parallel on 1200 mm.</small>	8000	1500	1200	YES	
3	EHS 1212 RBH18	1200x1200x180	8000	1500	1000	NO	
4	EHS 1212 SS-3H18 <small>*เหล็กขนานด้านซาดัก</small>	1200x1200x180 <small>*Steel parallel on skid</small>	8000	1500	1200	YES	
5	EHS 1012 RBH18D	1000x1200x180	8000	2000	1200	NO	
6	EHS 1212 RBH18D	1200x1200x180	8000	2000	1200	NO	



Style : Non-Perimeter

Bottom Support : 3 Runners

Material : HDPE



4 way



2 way



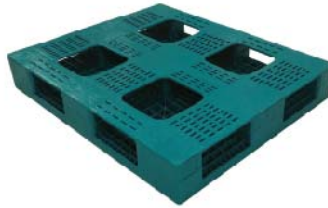
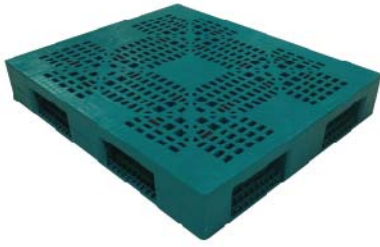
2 way

No	Item No	Size WxLxH (mm.)	Static (kg.)	Dynamic (kg.)	Racking Selective (kg.)	Steel Reinforced	Drawing Specification (mm.)
1	EHL 1012 FTH18	1000x1200x180	8000	1500	1000	NO	
2	EHL 1012 SS-3H18 <small>*เหล็กขนานด้าน 1200 มม.</small>	1000x1200x180 <small>*Steel parallel on 1200 mm.</small>	8000	1500	1200	YES	
3	EHL 1212 FTH18	1200x1200x180	8000	1500	1000	NO	
4	EHL 1212 SS-3H18 <small>*เหล็กขนานด้านซาดัก</small>	1200x1200x180 <small>*Steel parallel on skid</small>	8000	1500	1200	YES	
5	EHL 1012 FTH18D	1000x1200x180	8000	2000	1200	NO	
6	EHL 1212 FTH18D	1200x1200x180	8000	2000	1200	NO	

# Titan Series

Height 200 mm.

# Heavy Duty Pallets



Style : Full-Perimeter

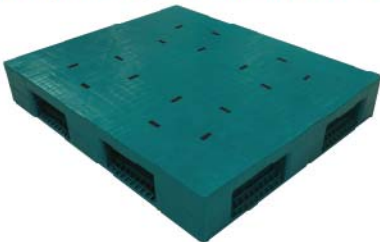
Bottom Support : Cross

Material : HDPE



No	Item No	Size WxLxH (mm.)	Static (kg.)	Dynamic (kg.)	Racking Selective (kg.)	Steel Reinforced	Drawing Specification (mm.)
1	WHV 1012 RBH20	1000x1200x200	10000	2000	1200	NO	
2	WHV 1012 SS-3H20 <small>*เหล็กขนานด้าน 1200 มม.</small>	1000x1200x200 <small>*Steel parallel on 1200 mm.</small>	10000	2000	1500	YES	
3	WHV 1212 RBH20	1200x1200x200	10000	2000	1200	NO	
4	WHV 1212 SS-3H20 <small>*เหล็กขนาน 1 ด้าน</small>	1200x1200x200 <small>*Steel parallel only one side</small>	10000	2000	1000/ 1500**	YES	

\*\*1500 kg. racking when the steel reinforced direction is perpendicular with rack beam support.



Style : Full-Perimeter

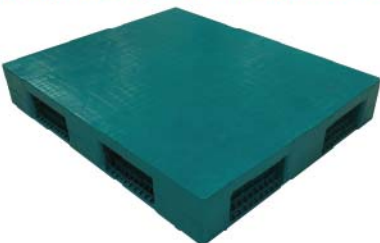
Bottom Support : Cross

Material : HDPE



No	Item No	Size WxLxH (mm.)	Static (kg.)	Dynamic (kg.)	Racking Selective (kg.)	Steel Reinforced	Drawing Specification (mm.)
1	WHS 1012 RBH20	1000x1200x200	10000	2000	1200	NO	
2	WHS 1012 SS-3H20 <small>*เหล็กขนานด้าน 1200 มม.</small>	1000x1200x200 <small>*Steel parallel on 1200 mm.</small>	10000	2000	1500	YES	
3	WHS 1212 RBH20	1200x1200x200	10000	2000	1200	NO	
4	WHS 1212 SS-3H20 <small>*เหล็กขนาน 1 ด้าน</small>	1200x1200x200 <small>*Steel parallel only one side</small>	10000	2000	1000/ 1500**	YES	

\*\*1500 kg. racking when the steel reinforced direction is perpendicular with rack beam support.



Style : Full-Perimeter

Bottom Support : Cross

Material : HDPE



No	Item No	Size WxLxH (mm.)	Static (kg.)	Dynamic (kg.)	Racking Selective (kg.)	Steel Reinforced	Drawing Specification (mm.)
1	WHL 1012 FTH20	1000x1200x200	10000	2000	1200	NO	
2	WHL 1012 SS-3H20 <small>*เหล็กขนานด้าน 1200 มม.</small>	1000x1200x200 <small>*Steel parallel on 1200 mm.</small>	10000	2000	1500	YES	
3	WHL 1212 FTH20	1200x1200x200	10000	2000	1200	NO	
4	WHL 1212 SS-3H20 <small>*เหล็กขนาน 1 ด้าน</small>	1200x1200x200 <small>*Steel parallel only one side</small>	10000	2000	1000/ 1500**	YES	

\*\*1500 kg. racking when the steel reinforced direction is perpendicular with rack beam support.

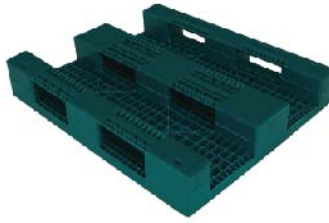
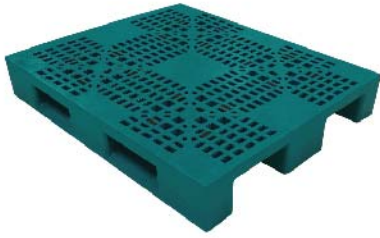
Remark: \*Racking load is specified under Selective rack. However, Racking load capability may vary with different product packaging, and different fork entry. Under other type of rack such as Drive-In rack, please contact salesperson.

\*\*Pallet dimension and weight are produced with tolerance. Standard dimension allowance range: +/-0.7% ; weight tolerance +/-1 kg.

# Titan Series

Height 200 mm.

# Heavy Duty Pallets



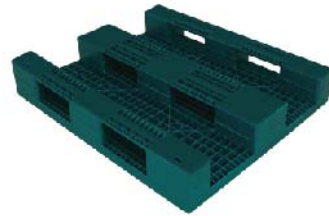
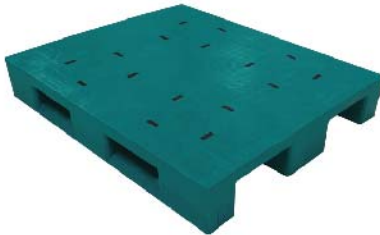
Style : Non-Perimeter

Bottom Support : 3 Runners

Material : HDPE

4 way 2 way 2 way

No	Item No	Size WxLxH (mm.)	Static (kg.)	Dynamic (kg.)	Racking Selective (kg.)	Steel Reinforced	Drawing Specification (mm.)
1	EHV 1012 RBH20	1000x1200x200	8000	1500	1000	NO	
2	EHV 1012 SS-3H20 <small>*เหล็กขนานด้าน 1200 มม.</small>	1000x1200x200 <small>*Steel parallel on 1200 mm.</small>	8000	1500	1200	YES	
3	EHV 1212 RBH20	1200x1200x200	8000	1500	1000	NO	
4	EHV 1212 SS-3H20 <small>*เหล็กขนานด้านซาลัก</small>	1200x1200x200 <small>*Steel parallel on skid</small>	8000	1500	1200	YES	



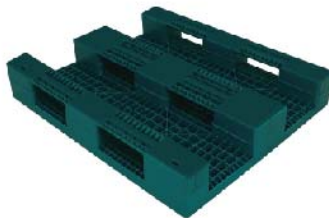
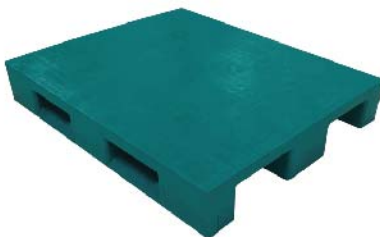
Style : Non-Perimeter

Bottom Support : 3 Runners

Material : HDPE

4 way 2 way 2 way

No	Item No	Size WxLxH (mm.)	Static (kg.)	Dynamic (kg.)	Racking Selective (kg.)	Steel Reinforced	Drawing Specification (mm.)
1	EHS 1012 RBH20	1000x1200x200	8000	1500	1000	NO	
2	EHS 1012 SS-3H20 <small>*เหล็กขนานด้าน 1200 มม.</small>	1000x1200x200 <small>*Steel parallel on 1200 mm.</small>	8000	1500	1200	YES	
3	EHS 1212 RBH20	1200x1200x200	8000	1500	1000	NO	
4	EHS 1212 SS-3H20 <small>*เหล็กขนานด้านซาลัก</small>	1200x1200x200 <small>*Steel parallel on skid</small>	8000	1500	1200	YES	



Style : Non-Perimeter

Bottom Support : 3 Runners

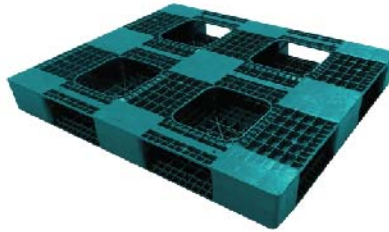
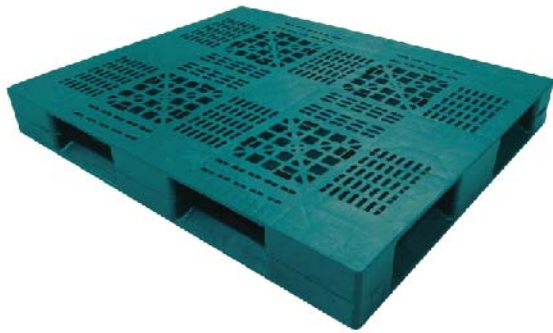
Material : HDPE

4 way 2 way 2 way

No	Item No	Size WxLxH (mm.)	Static (kg.)	Dynamic (kg.)	Racking Selective (kg.)	Steel Reinforced	Drawing Specification (mm.)
1	EHL 1012 FTH20	1000x1200x200	8000	1500	1000	NO	
2	EHL 1012 SS-3H20 <small>*เหล็กขนานด้าน 1200 มม.</small>	1000x1200x200 <small>*Steel parallel on 1200 mm.</small>	8000	1500	1200	YES	
3	EHL 1212 FTH20	1200x1200x200	8000	1500	1000	NO	
4	EHL 1212 SS-3H20 <small>*เหล็กขนานด้านซาลัก</small>	1200x1200x200 <small>*Steel parallel on skid</small>	8000	1500	1200	YES	

# New Titan Series Heavy Duty Pallets

Height 150 mm.



Style : Full-Perimeter  
 Bottom Support : Cross  
 Material : HDPE



4 way

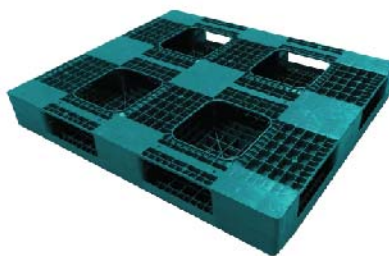


4 way



N/A

No	Item No	Size WxLxH (mm.)	Static (kg.)	Dynamic (kg.)	Racking Selective (kg.)	Steel Reinforced	Drawing Specification (mm.)
1	WHV 1012 RBN	1000x1200x150	6000	2000	1000	NO	
2	WHV 1012 SSN-3 <small>*เหล็กขนาดด้าน 1200 มม.</small>	1000x1200x150 <small>*Steel parallel on 1200 mm.</small>	6500	2000	1200	YES	
3	WHV 1012 SSNX-3 <small>*เหล็กขนาดด้าน 1000 มม.</small>	1000x1200x150 <small>*Steel parallel on 1000 mm.</small>	6500	2000	1200	YES	
4	WHV 1112 RBN	1100x1200x150	6000	2000	1000	NO	
5	WHV 1112 SSN-3 <small>*เหล็กขนาดด้าน 1200 มม.</small>	1100x1200x150 <small>*Steel parallel on 1200 mm.</small>	6500	2000	1200	YES	
6	WHV 1112 SSNX-3 <small>*เหล็กขนาดด้าน 1100 มม.</small>	1100x1200x150 <small>*Steel parallel on 1100 mm.</small>	6500	2000	1200	YES	
7	WHV 1212 RBN	1200x1200x150	6000	2000	1000	NO	
8	WHV 1212 SSN-3 <small>*เหล็กขนาด 1 ด้าน</small>	1200x1200x150 <small>*Steel parallel only one side</small>	6500	2000	1200	YES	



Style : Full-Perimeter  
 Bottom Support : Cross  
 Material : HDPE



4 way



4 way



N/A

No	Item No	Size WxLxH (mm.)	Static (kg.)	Dynamic (kg.)	Racking Selective (kg.)	Steel Reinforced	Drawing Specification (mm.)
1	WHS 1012 RBN	1000x1200x150	6000	2000	1000	NO	
2	WHS 1012 SSN-3 <small>*เหล็กขนาดด้าน 1200 มม.</small>	1000x1200x150 <small>*Steel parallel on 1200 mm.</small>	6500	2000	1200	YES	
3	WHS 1012 SSNX-3 <small>*เหล็กขนาดด้าน 1000 มม.</small>	1000x1200x150 <small>*Steel parallel on 1000 mm.</small>	6500	2000	1200	YES	
4	WHS 1112 RBN	1100x1200x150	6000	2000	1000	NO	
5	WHS 1112 SSN-3 <small>*เหล็กขนาดด้าน 1200 มม.</small>	1100x1200x150 <small>*Steel parallel on 1200 mm.</small>	6500	2000	1200	YES	
6	WHS 1112 SSNX-3 <small>*เหล็กขนาดด้าน 1100 มม.</small>	1100x1200x150 <small>*Steel parallel on 1100 mm.</small>	6500	2000	1200	YES	
7	WHS 1212 RBN	1200x1200x150	6000	2000	1000	NO	
8	WHS 1212 SSN-3 <small>*เหล็กขนาด 1 ด้าน</small>	1200x1200x150 <small>*Steel parallel only one side</small>	6500	2000	1200	YES	

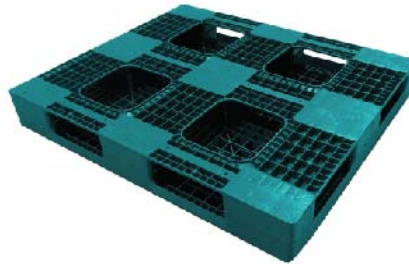
Remark: \*Racking load is specified under Selective rack. However, Racking load capability may vary with different product packaging, and different fork entry. Under other type of rack such as Drive-In rack, please contact salesperson.

\*\*Pallet dimension and weight are produced with tolerance. Standard dimension allowance range: +/-0.7% ; weight tolerance +/-1 kg.

# New Titan Series

Height 150 mm.

# Heavy Duty Pallets



Style : Full-Perimeter  
 Bottom Support : Cross  
 Material : HDPE

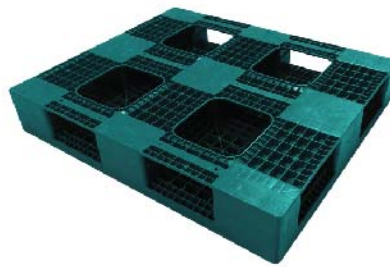
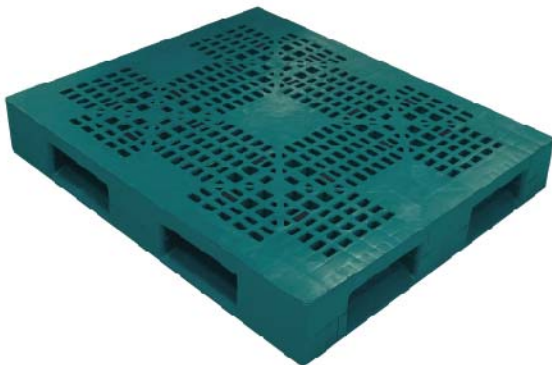
-  4 way
-  4 way
-  N/A

No	Item No	Size WxLxH (mm.)	Static (kg.)	Dynamic (kg.)	Racking Selective (kg.)	Steel Reinforced	Drawing Specification (mm.)
1	WHL 1012 FTN	1000x1200x150	6000	2000	1000	NO	
2	WHL 1012 SSN-3 <small>*เหล็กขนานด้าน 1200 มม.</small>	1000x1200x150 <small>*Steel parallel on 1200 mm.</small>	6500	2000	1200	YES	
3	WHL 1012 SSN-X-3 <small>*เหล็กขนานด้าน 1000 มม.</small>	1000x1200x150 <small>*Steel parallel on 1000 mm.</small>	6500	2000	1200	YES	
4	WHL 1112 FTN	1100x1200x150	6000	2000	1000	NO	
5	WHL 1112 SSN-3 <small>*เหล็กขนานด้าน 1200 มม.</small>	1100x1200x150 <small>*Steel parallel on 1200 mm.</small>	6500	2000	1200	YES	
6	WHL 1112 SSN-X-3 <small>*เหล็กขนานด้าน 1100 มม.</small>	1100x1200x150 <small>*Steel parallel on 1100 mm.</small>	6500	2000	1200	YES	
7	WHL 1212 FTN	1200x1200x150	6000	2000	1000	NO	
8	WHL 1212 SSN-3 <small>*เหล็กขนาน 1 ด้าน</small>	1200x1200x150 <small>*Steel parallel only one side</small>	6500	2000	1200	YES	

# New Titan Series

Height 180 mm.

# Heavy Duty Pallets



Style : Full-Perimeter  
 Bottom Support : Cross  
 Material : HDPE

-  4 way
-  4 way
-  N/A

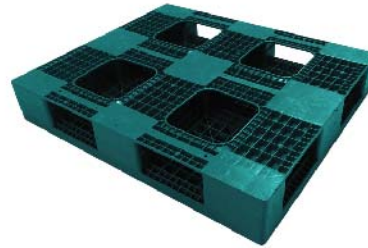
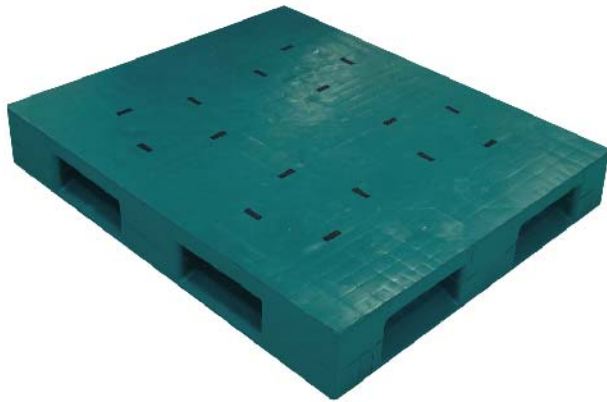
No	Item No	Size WxLxH (mm.)	Static (kg.)	Dynamic (kg.)	Racking Selective (kg.)	Steel Reinforced	Drawing Specification (mm.)
1	WHV 1012 RBNH18	1000x1200x180	10000	2000	1000	NO	
2	WHV 1012 SSN-3H18 <small>*เหล็กขนานด้าน 1200 มม.</small>	1000x1200x180 <small>*Steel parallel on 1200 mm.</small>	10000	2000	1500	YES	
3	WHV 1212 RBNH18	1200x1200x180	10000	2000	1000	NO	
4	WHV 1212 SSN-3H18 <small>*เหล็กขนาน 1 ด้าน</small>	1200x1200x180 <small>*Steel parallel only one side</small>	10000	2000	1000/ 1500**	YES	

\*\*1500 kg. racking when the steel reinforced direction is perpendicular with rack beam support.



# New Titan Series Heavy Duty Pallets

Height 180 mm.

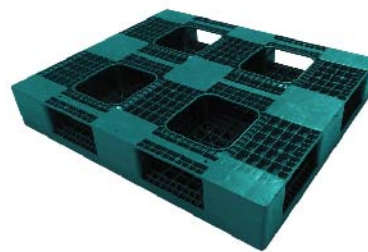
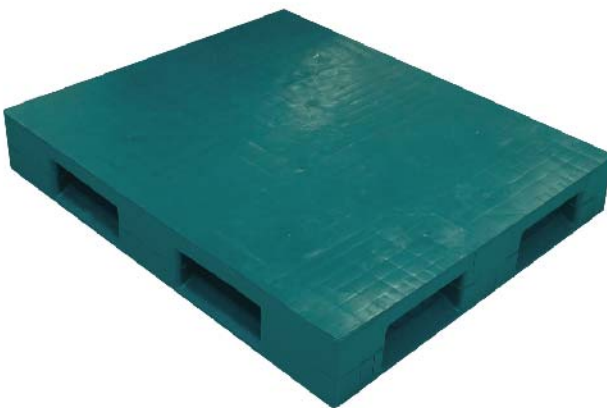


Style : Full-Perimeter  
 Bottom Support : Cross  
 Material : HDPE

-  4 way
-  4 way
-  N/A

No	Item No	Size WxLxH (mm.)	Static (kg.)	Dynamic (kg.)	Racking Selective (kg.)	Steel Reinforced	Drawing Specification (mm.)
1	WHS 1012 RBNH18	1000x1200x180	10000	2000	1000	NO	
2	WHS 1012 SSN-3H18 <small>*เหล็กขนานด้าน 1200 มม.</small>	1000x1200x180 <small>*Steel parallel on 1200 mm.</small>	10000	2000	1500	YES	
3	WHS 1212 RBNH18	1200x1200x180	10000	2000	1000	NO	
4	WHS 1212 SSN-3H18 <small>*เหล็กขนาน 1 ด้าน</small>	1200x1200x180 <small>*Steel parallel only one side</small>	10000	2000	1000/ 1500**	YES	

\*\*1500 kg. racking when the steel reinforced direction is perpendicular with rack beam support.



Style : Full-Perimeter  
 Bottom Support : Cross  
 Material : HDPE

-  4 way
-  4 way
-  N/A

No	Item No	Size WxLxH (mm.)	Static (kg.)	Dynamic (kg.)	Racking Selective (kg.)	Steel Reinforced	Drawing Specification (mm.)
1	WHL 1012 FTNH18	1000x1200x180	10000	2000	1000	NO	
2	WHL 1012 SSN-3H18 <small>*เหล็กขนานด้าน 1200 มม.</small>	1000x1200x180 <small>*Steel parallel on 1200 mm.</small>	10000	2000	1500	YES	
3	WHL 1212 FTNH18	1200x1200x180	10000	2000	1000	NO	
4	WHL 1212 SSN-3H18 <small>*เหล็กขนาน 1 ด้าน</small>	1200x1200x180 <small>*Steel parallel only one side</small>	10000	2000	1000/ 1500**	YES	

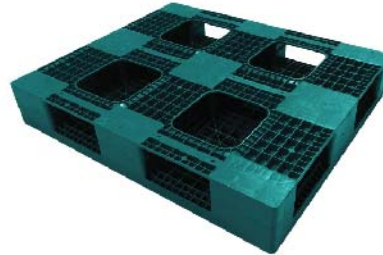
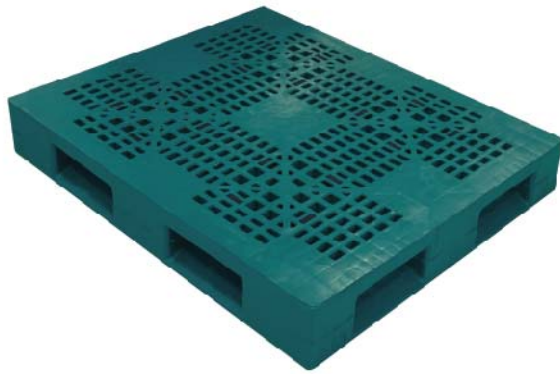
\*\*1500 kg. racking when the steel reinforced direction is perpendicular with rack beam support.

Remark: \*Racking load is specified under Selective rack. However, Racking load capability may vary with different product packaging, and different fork entry. Under other type of rack such as Drive-In rack, please contact salesperson.

\*\*Pallet dimension and weight are produced with tolerance. Standard dimension allowance range: +/-0.7% ; weight tolerance +/-1 kg.

# New Titan Series Heavy Duty Pallets

Height 200 mm.

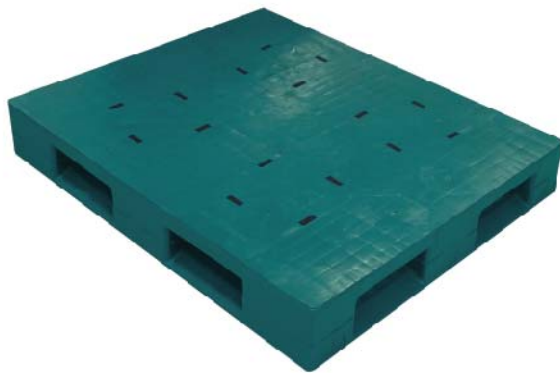


Style : Full-Perimeter  
 Bottom Support : Cross  
 Material : HDPE

-  4 way
-  4 way
-  N/A

No	Item No	Size WxLxH (mm.)	Static (kg.)	Dynamic (kg.)	Racking Selective (kg.)	Steel Reinforced	Drawing Specification (mm.)
1	WHV 1012 RBNH20	1000x1200x200	10000	2000	1000	NO	
2	WHV 1012 SSN-3H20 <small>*เหล็กขนาดด้าน 1200 มม.</small>	1000x1200x200 <small>*Steel parallel on 1200 mm.</small>	10000	2000	1500	YES	
3	WHV 1212 RBNH20	1200x1200x200	10000	2000	1000	NO	
4	WHV 1212 SSN-3H20 <small>*เหล็กขนาด 1 ด้าน</small>	1200x1200x200 <small>*Steel parallel only one side</small>	10000	2000	1000/ 1500**	YES	
5	WHV 1012 RBNH20D	1000x1200x200	10000	2000	1200	NO	
6	WHV 1212 RBNH20D	1200x1200x200	10000	2000	1200	NO	

\*\*1500 kg. racking when the steel reinforced direction is perpendicular with rack beam support.



Style : Full-Perimeter  
 Bottom Support : Cross  
 Material : HDPE

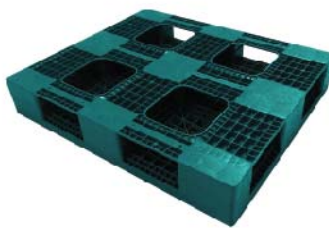
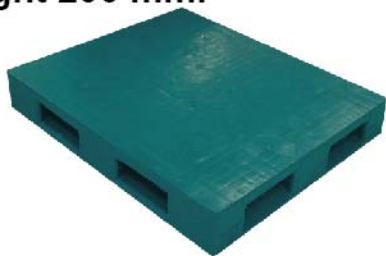
-  4 way
-  4 way
-  N/A

No	Item No	Size WxLxH (mm.)	Static (kg.)	Dynamic (kg.)	Racking Selective (kg.)	Steel Reinforced	Drawing Specification (mm.)
1	WHS 1012 RBNH20	1000x1200x200	10000	2000	1000	NO	
2	WHS 1012 SSN-3H20 <small>*เหล็กขนาดด้าน 1200 มม.</small>	1000x1200x200 <small>*Steel parallel on 1200 mm.</small>	10000	2000	1500	YES	
3	WHS 1212 RBNH20	1200x1200x200	10000	2000	1000	NO	
4	WHS 1212 SSN-3H20 <small>*เหล็กขนาด 1 ด้าน</small>	1200x1200x200 <small>*Steel parallel only one side</small>	10000	2000	1000/ 1500**	YES	
5	WHS 1012 RBNH20D	1000x1200x200	10000	2000	1200	NO	
6	WHS 1212 RBNH20D	1200x1200x200	10000	2000	1200	NO	

\*\*1500 kg. racking when the steel reinforced direction is perpendicular with rack beam support.

# New Titan Series Heavy Duty Pallets

Height 200 mm.



Style : Full-Perimeter

Bottom Support : Cross

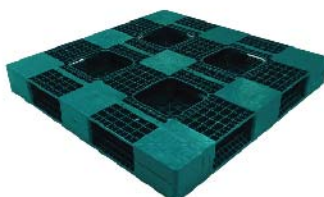
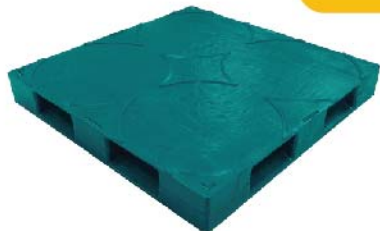
Material : HDPE



No	Item No	Size WxLxH (mm.)	Static (kg.)	Dynamic (kg.)	Racking Selective (kg.)	Steel Reinforced	Drawing Specification (mm.)
1	WHL 1012 FTNH20	1000x1200x200	10000	2000	1000	NO	
2	WHL 1012 SSN-3H20 <small>*เหล็กขนานด้าน 1200 มม.</small>	1000x1200x200 <small>*Steel parallel on 1200 mm.</small>	10000	2000	1500	YES	
3	WHL 1212 FTNH20	1200x1200x200	10000	2000	1000	NO	
4	WHL 1212 SSN-3H20 <small>*เหล็กขนาน 1 ด้าน</small>	1200x1200x200 <small>*Steel parallel only one side</small>	10000	2000	1000/ 1500**	YES	
5	WHL 1012 FTNH20D	1000x1200x200	10000	2000	1200	NO	
6	WHL 1212 FTNH20D	1200x1200x200	10000	2000	1200	NO	

\*\*1500 kg. racking when the steel reinforced direction is perpendicular with rack beam support.

# Drum Series Heavy Duty Pallets



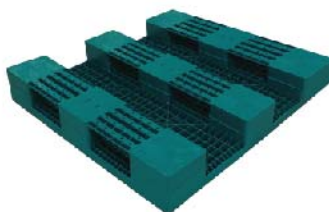
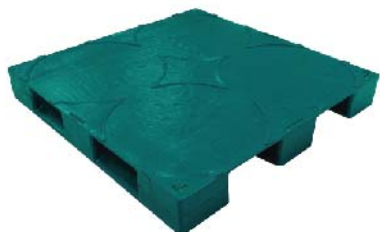
Style : Full-Perimeter

Bottom Support : Cross

Material : HDPE



No	Item No	Size WxLxH (mm.)	Static (kg.)	Dynamic (kg.)	Racking Selective (kg.)	Steel Reinforced	Drawing Specification (mm.)
1	WHS 1212 DRN	1200x1200x150	6000	2000	N/A	NO	
2	WHS 1212 DRNSS-3 <small>*เหล็กขนาน 1 ด้าน</small>	1200x1200x150 <small>*Steel parallel only one side</small>	6500	2000	1000	YES	



Style : Non-Perimeter

Bottom Support : 3 Runners

Material : HDPE



No	Item No	Size WxLxH (mm.)	Static (kg.)	Dynamic (kg.)	Racking Selective (kg.)	Steel Reinforced	Drawing Specification (mm.)
1	EHS 1212 DRSS-3 <small>*เหล็กขนานด้านตรงข้ามพลาสติก</small>	1200x1200x150 <small>*Steel parallel support dynamic loading</small>	6500	1500	N/A	YES	
2	EHS 1212 DRSS-6 <small>*เหล็กไขว้</small>	1200x1200x150 <small>*Steel intersect</small>	6500	1500	1000	YES	

Remark: \*Racking load is specified under Selective rack. However, Racking load capability may vary with different product packaging, and different fork entry. Under other type of rack such as Drive-In rack, please contact salesperson.

\*\*Pallet dimension and weight are produced with tolerance. Standard dimension allowance range: +/-0.7% ; weight tolerance +/-1 kg.

# Titan Spill Containment Pallet

**SPL 1313 SH** 1320x1320x150 mm

Titan Spill Containment Pallet 1313SH for 4 drums



Static Load : 3000 kg  
Dynamic Load : 1300 kg  
Racking Load : N/A kg

4 way N/A N/A

**SPL 1313 TL** 1320x1320x300 mm

Titan Spill Containment Pallet 1313TL for 4 drums



Static Load : 3000 kg  
Dynamic Load : 1300 kg  
Racking Load : N/A kg

4 way 4 way N/A

**SPL 1306 TL** 1320x680x300 mm

Titan Spill Containment Pallet 1306TL for 2 drums



Static Load : 1300 kg  
Dynamic Load : 600 kg  
Racking Load : N/A kg

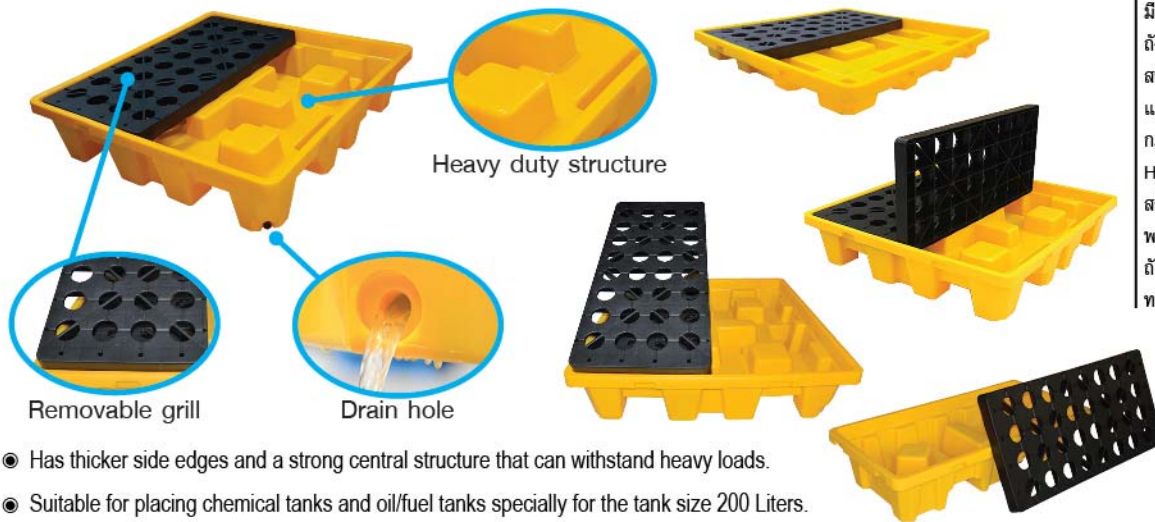
2 way 2 way N/A

## Spill Plastic Pallet

for chemical tank has a purpose for storage of oil tanks and various chemical tanks to prevent chemical leakage and oil on the floor for cleanliness and safety at the workplace which complies with HACCP regulations. It is produced from HDPE raw material which make it strong, durable, has a strong structure to support the loading capacity and the edge of the pallet is thick. In the part of the plastic sieve that supports the tank can be removed, prevents slipping, is durable and is not easily broken.

## พาเลทรองถังสารเคมี

มีวัตถุประสงค์เพื่อใช้จัดเก็บถังน้ำมัน และถังสารเคมีต่างๆ เพื่อป้องกันการรั่วไหลของสารเคมี และน้ำมันลงบนพื้น เพื่อความสะอาดและปลอดภัยในการใช้งาน และเป็นไปตามกฎระเบียบของ HACCP ผลิตภัณฑ์ผลิตจากวัสดุ HDPE ทำให้มีความแข็งแรง ทนทาน มีโครงสร้างที่แข็งแรงในการรองรับน้ำหนัก ขอบของพาเลทมีความหนา ในส่วนของตะแกรงที่รองถังสามารถถอดออกได้ ป้องกันการลื่น ทนทาน และไม่แตกหักง่าย



Removable grill

Drain hole

Heavy duty structure

- Has thicker side edges and a strong central structure that can withstand heavy loads.
- Suitable for placing chemical tanks and oil/fuel tanks specially for the tank size 200 Liters.
- Made from polyethylene material, rust-proof, corrosion-resistant as well.
- The surface of the plastic sieve that supports the tank is strong, durable, preventing the slip of the tank while placing.
- Help to maintain cleanliness and safety at the workplace and reduce the risk or accidents from chemical leakage.
- Prevent chemical contamination from the leakag, therefore, it is especially suitable for food, pharmaceutical and other industries.
- มีขอบด้านข้างที่หนาขึ้นและมีโครงสร้างตรงส่วนกลางที่แข็งแรงสามารถรับน้ำหนักได้ดี
- เหมาะสำหรับวางถังสารเคมี หรือ ถังน้ำมัน โดยเฉพาะขนาด 200ลิตร และ อื่นๆ
- ผลิตจากวัสดุโพลีเอทิลีน ไม่เป็นสนิม ป้องกันการกัดกร่อนได้เป็นอย่างดี
- พื้นผิวในส่วนของตะแกรงที่รองรับถังมีความแข็งแรง ทนทาน ป้องกันการลื่นของถังในขณะวาง
- ช่วยรักษาความสะอาดและความปลอดภัยในการทำงาน ลดความเสี่ยงการลื่นผู้ใช้งานในกรณีที่เกิดจากสารเคมีรั่วไหล
- ป้องกันการปนเปื้อนของสารเคมีในกรณีที่มีการรั่วไหล จึงเหมาะเป็นอย่างยิ่งกับ อุตสาหกรรมอาหาร ยา และอื่นๆ



Environment friendly

## Allo Top Frame

**Allo Top Frame**



Item No	Size WxLxH
TOP 1012 AL	1000x1200x22 mm
TOP 1111 AL	1100x1100x22 mm
TOP 1212 AL	1200x1200x22 mm

**Allo Top Frame (New)**



Item No	Size WxLxH
TOP 1012 ALN	1000x1200x14 mm
TOP 1212 ALN	1200x1200x14 mm

**Allo Top Frame 1012 (New) 2-PIECES SNAP**



Item No	Size WxLxH
TOP 1012 DALN	1200x1200x25 mm
TOP 1212 DALN	1200x1200x25 mm

- Protects your product during storage and transport by unitizing full pallet load of aluminum and steel cans, plastic and glass bottles, and other rigid packaging.
- It is lightweight and easy for handling on manual loading applications.
- Solid and fully enclosed construction which eliminates moisture.
- Produced by mould injection process which has accurate dimension.
- Improves workplace safety with smooth design and stable stackability.

## WINNER INTER PLAS CO., LTD.

71, 71/1 MU 2, SALAYA, PUDTHAMONTHON,  
NAKORNPHATHOM 73170 THAILAND

### บริษัท วินเนอร์ อินเตอร์ พลาสติก จำกัด

71, 71/1 หมู่ที่ 2 ต.ศาลายา อ.พุทธมณฑล จ.นครปฐม 73170

☎ : (66) 34 964-644 ; (66) 34 964-655  
: (66) 34 964-666 ; (66) 2 105 4799

🖨 : (66) 34 964 678 ; (66) 34 274-925 ; (66) 2 026 6337

✉ : sales@dino-plus.com

🌐 : www.dino-plus.com



THIS IS  
**WINNER**  
PROUD TO BE  
**WINNER**



JAS-ANZ



Line: DINO PLUS

